

SOGI-Inclusive Education

Meghan Day, MECC, Executive Director

Nick Poeschek, MECC, Director

Scout Gray, ARC Foundation, National Program Director

November 17, 2023



Ministry of
Education and
Child Care



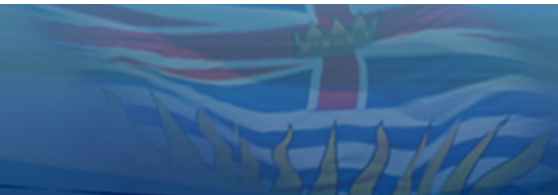
Territorial Acknowledgement

The Ministry of Education and Child Care acknowledges that its offices are situated on the Lək' wəŋən territory of the Esquimalt and Songhees Nations and on the territories of the xʷməθkʷəy̓əm (Musqueam), Sk̓wx̓wú7mesh (Squamish), and səlilwətał (Tsleil-Waututh) Nations.



BRITISH
COLUMBIA

Ministry of Education
and Child Care



Safe, Caring, and Inclusive Schools

- An education system that is welcoming for all B.C.'s K-12 students and their families with a focus on student success and well-being at the centre.
- Every adult in the K-12 system is responsible to proactively create safe, caring, and inclusive learning environments for ALL students and support experiences of safety, dignity, and respect.
- The Province created the erase (Expect Respect and A Safe Education) strategy to provide resources to help schools, families, and communities build more safe and caring school communities.



SOGI-Inclusive Education - Purpose



Create inclusive schools for ALL students to grow and thrive

--

SOGI-Inclusive Education provides supports to:

- *Strengthen policies and procedures*
- *Foster inclusive school environments*
- *Develop resources and tools*



BRITISH
COLUMBIA

Ministry of Education
and Child Care



Non-truths

Truths

SOGI-Inclusive Education – Non-truths and truths

1. SOGI was snuck into curriculum
2. SOGI encourages students to change genders
3. SOGI resources contain explicit content
4. SOGI takes away parents' rights
5. SOGI is the same as sexual health education



BRITISH
COLUMBIA

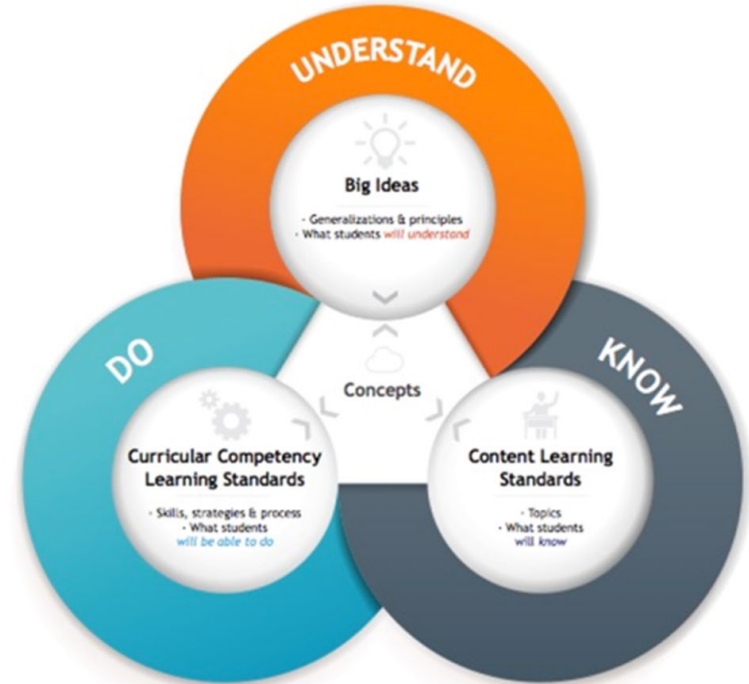
Ministry of Education
and Child Care

Provincial Curriculum

K-12 Provincial curriculum was co-constructed in collaboration with B.C. and Yukon educators, Indigenous educators, and academic specialists

Key shifts in redesigned curriculum:

- Personalized and flexible
- Integrates the Core Competencies (Thinking, Communication, and Social and Personal Responsibility)
- Focus on essential learning and Big Ideas in each area of learning
- Focus on literacy and numeracy foundations
- Indigenous perspectives, worldviews, and content weaved into all areas of learning and grade levels
- Built around a Know-Do-Understand (KDU) model with required Curricular Competency and Content Learning Standards.



The Curriculum and SOGI Education

- There is no mandated ‘SOGI curriculum’
- However, topics related to sexual identity are included in the curriculum, as well as learning standards related to things like respecting diversity
- The Physical and Health Education (PHE) curriculum covers a broad spectrum of topics, including sexual and reproductive health and gender
- While the PHE curriculum has learning standards related to sexual health, teachers have flexibility to teach these topics based on the needs of the students in the classroom.



Physical & Health Education Curriculum

Big Ideas	Learning Standards
<p>Kindergarten</p> <ul style="list-style-type: none">Learning about ourselves and others helps us develop a positive attitude and caring behaviours which helps us build healthy relationships	<p>Kindergarten</p> <ul style="list-style-type: none">Names for parts of the body, including male and female private partsCaring behaviours in groups and familiesReliable sources of health information
<p>Grade 3</p> <ul style="list-style-type: none">Having good communication skills and managing our emotions enables us to develop and maintain healthy relationships	<p>Grade 3</p> <ul style="list-style-type: none">Nature and consequences of bullyingFactors that influence self-identityStrategies for accessing health information
<p>Grade 6</p> <ul style="list-style-type: none">We experience many changes in our lives that influence how we see ourselves and othersLearning about similarities and differences in individuals and groups influences community health	<p>Grade 6</p> <ul style="list-style-type: none">Consequences of bullying, stereotyping, and discriminationPhysical, emotional, and social changes that occur during puberty and adolescenceInfluences on individual identity, including sexual identity, gender, values, and beliefsSources of health information
<p>Grade 9</p> <ul style="list-style-type: none">Healthy relationships can help us lead rewarding and fulfilling livesAdvocating for the health and well-being of others connects us to our community	<p>Grade 9</p> <ul style="list-style-type: none">Consequences of bullying, stereotyping, and discriminationInfluences of physical, emotional, and social changes on identities and relationshipsSources of health information



Alternative Delivery Policy in B.C.



The Policy:

- Enables students and their families to consult with their school and choose a more comfortable means other than regular classroom instruction to address learning standards related to sensitive topics such as reproduction and sexuality.

Key Considerations:

- This policy does not allow students to simply 'opt-out' from learning about these topics
- This policy is specific to topics like reproduction and sexuality and does not apply to any other learning standards in the curriculum
- This policy is meant for parents and students to consult with staff at their school and arrange for an alternative means of learning about these topics



BRITISH
COLUMBIA

Ministry of Education
and Child Care

SOGI and Learning Resources

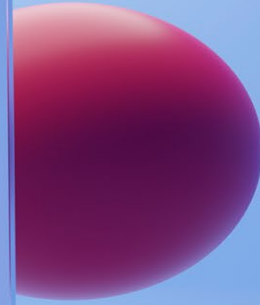
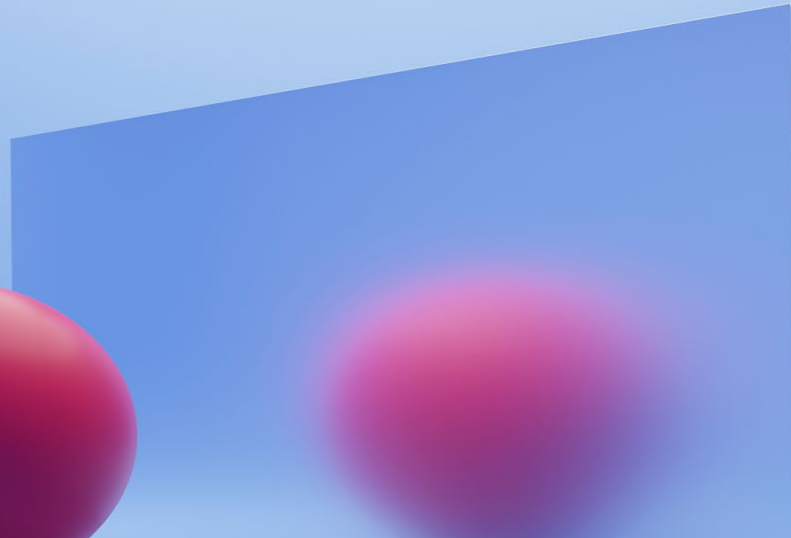
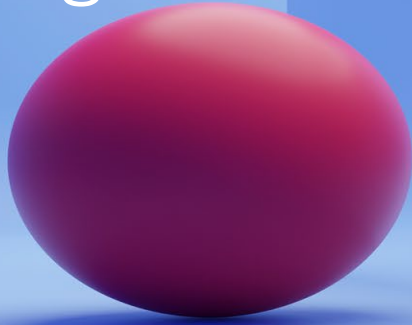
- Decisions about learning resources (including review, approval, acquisition, and use) are made by staff at the school and district level.
- The Ministry of Education and Child Care does not require the use of specific resources.
- While resources like SOGI 123 can help teachers create inclusive school environments for all students, their use in B.C. schools and classrooms is not mandatory or required for implementing the curriculum.



BRITISH
COLUMBIA

Ministry of Education
and Child Care

Why SOGI- inclusive learning?



SOGI-INCLUSIVE EDUCATION provides a MIRROR for some students and families to see themselves reflected and a WINDOW for all students to see the diversity that exists in society.



BRITISH
COLUMBIA

Ministry of Education
and Child Care

What is SOGI 1 2 3?

SOGI 1

POLICIES

The key components
of effective SOGI-inclusive
policies and procedures

SOGI 2

ENVIRONMENTS

Practices and behaviours
that lead to SOGI-inclusive
learning environments

SOGI 3

RESOURCES

SOGI-inclusive lesson
plans that align with the
current K-12 curriculum



BRITISH
COLUMBIA

Ministry of Education
and Child Care

What resources are available?

SOGleducation.org



Everyone
has a sexual
orientation
and gender
identity.



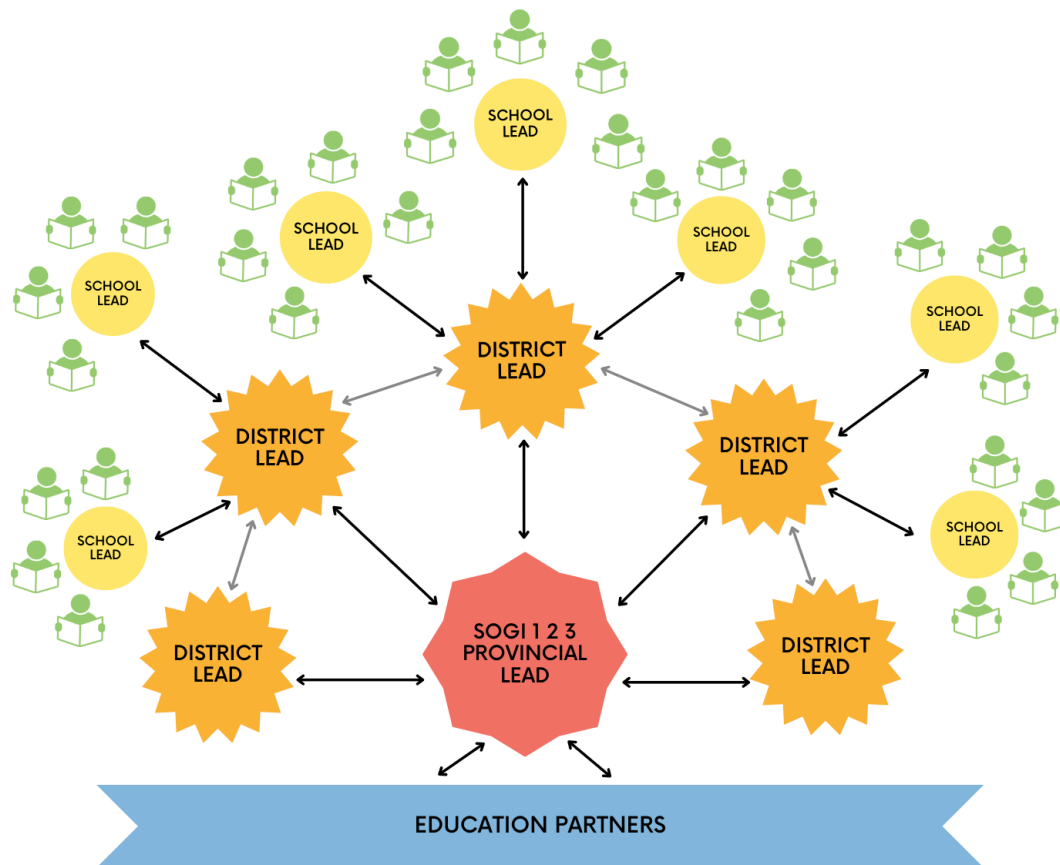
BRITISH
COLUMBIA

Ministry of Education
and Child Care

Children thrive
when **parents**
and **teachers**
work together



Educator Network Structure





BRITISH
COLUMBIA

Ministry of Education
and Child Care

